



PEEP

EARLY COMMUNICATORS

A 6 week speech & language programme for ages 15-36 months

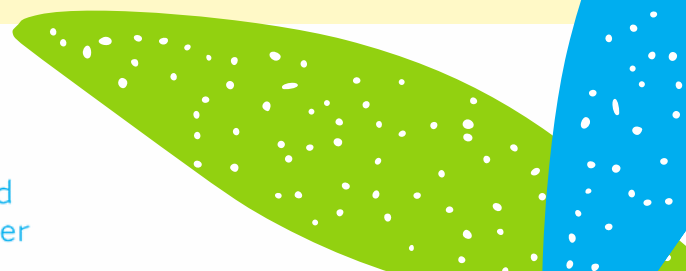
Parents
Early
Education
Partnership

PEEP sessions support parents, carers, babies and children to learn together

Contact your Family Hub


Family Hubs
Here for everyone

peep
supporting parents and children to learn together



Come along to a **Peep group**



Peep are fun and friendly groups for parents and carers with children from birth to around five years old. In Peep groups we share ideas, songs, stories and simple activities that build on everyday opportunities to support your child's learning, talking and social development through play.

You and your child can make friends and have fun, while finding out how the things you do now will help them become confident learners.

**Contact your
Family Hub**


Family Hubs
Here for everyone

peep
supporting parents and
children to learn together